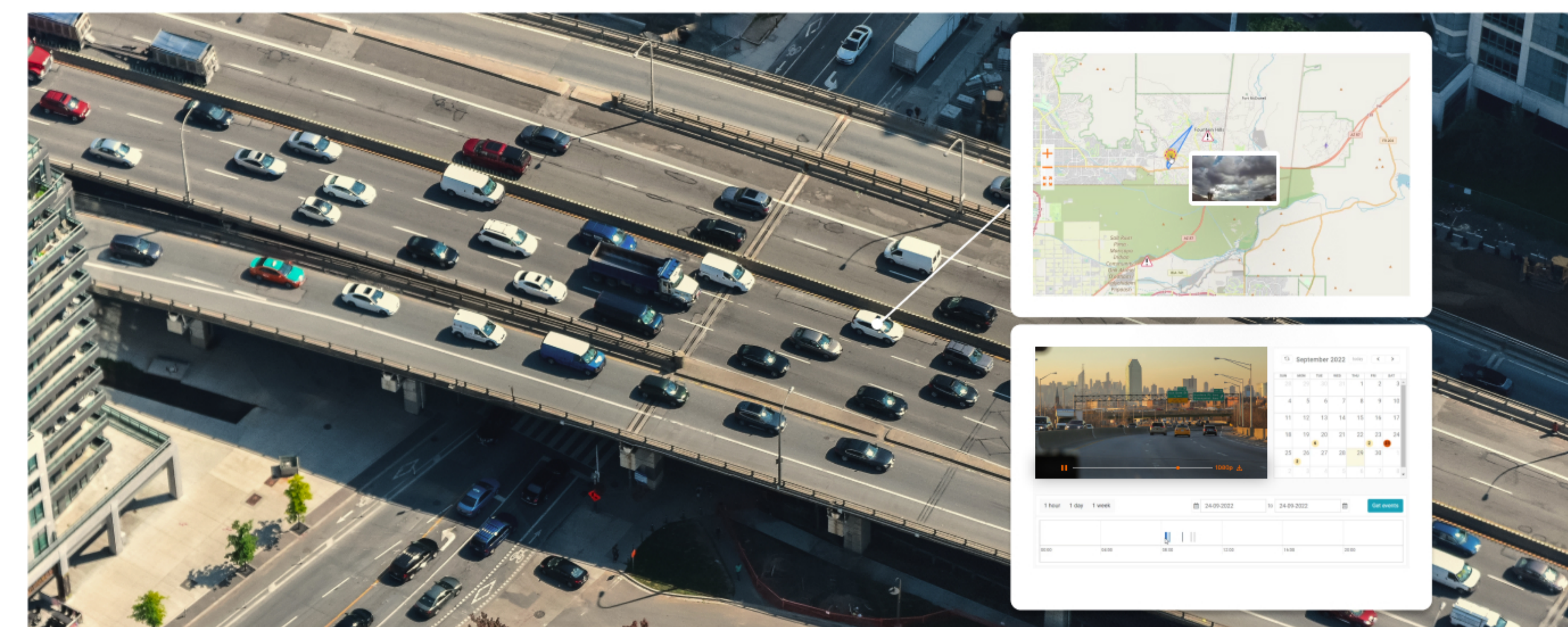
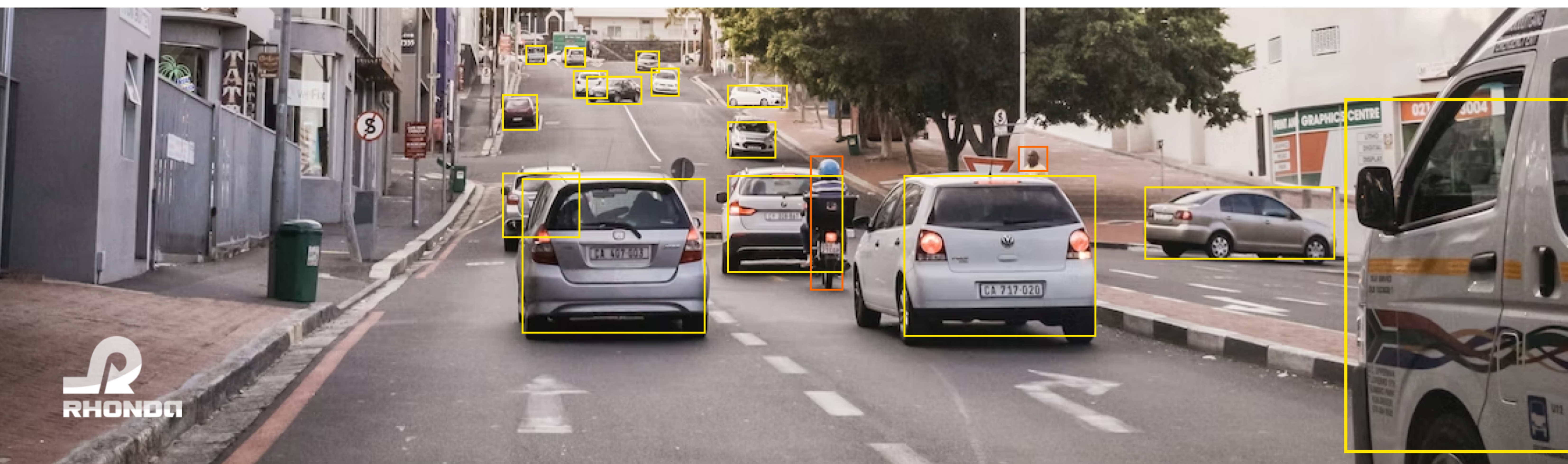


Video Telematics ADAS Camera EVK

The ADAS camera EVK is a platform designed to speed up the development of new driving safety systems. It is an off-the-shelf solution that can also be adapted for specific use cases and unique functionalities for customers.



The platform based on the powerful Ambarella SoC with integrated front-ADAS library offers an extensive camera feature set with ultimate accuracy and performance ADAS software onboard for automotive aftermarket and fleet management product development.



Key Features of ADAS Solution:

- Forward Collision Warning
- Lane Departure Warning
- Minimum Distance Warning
- Headway Distance Warning
- Object Detection
- Pedestrians Detection
- Lane Detection

Technical Specification & Feature Set:

- Ambarella® SoC
- Integrated AI for front-view ADAS
- High resolution video capture 1920 x1080
- High quality Sony image sensor
- Built in Wi-Fi connectivity
- External GNSS module
- Connected Video Cloud
- Mobile App for Video Cloud recordings access
- Up to 6MP@30 H.264 / H.265 recording
- Low-weight and small form-factor (W 50mm x H 44mm)



For more info/to request an ADAS evaluation kit contact: SalesTeam@rhondasoftware.com

